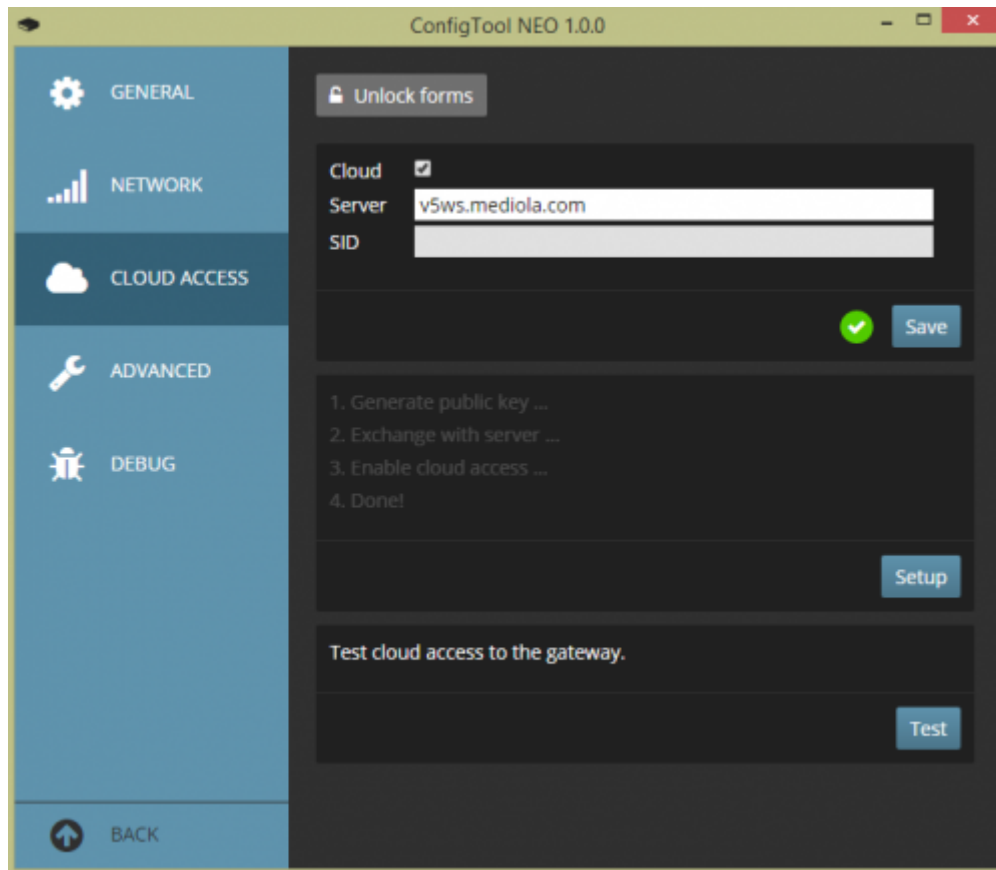


## Set cloud access

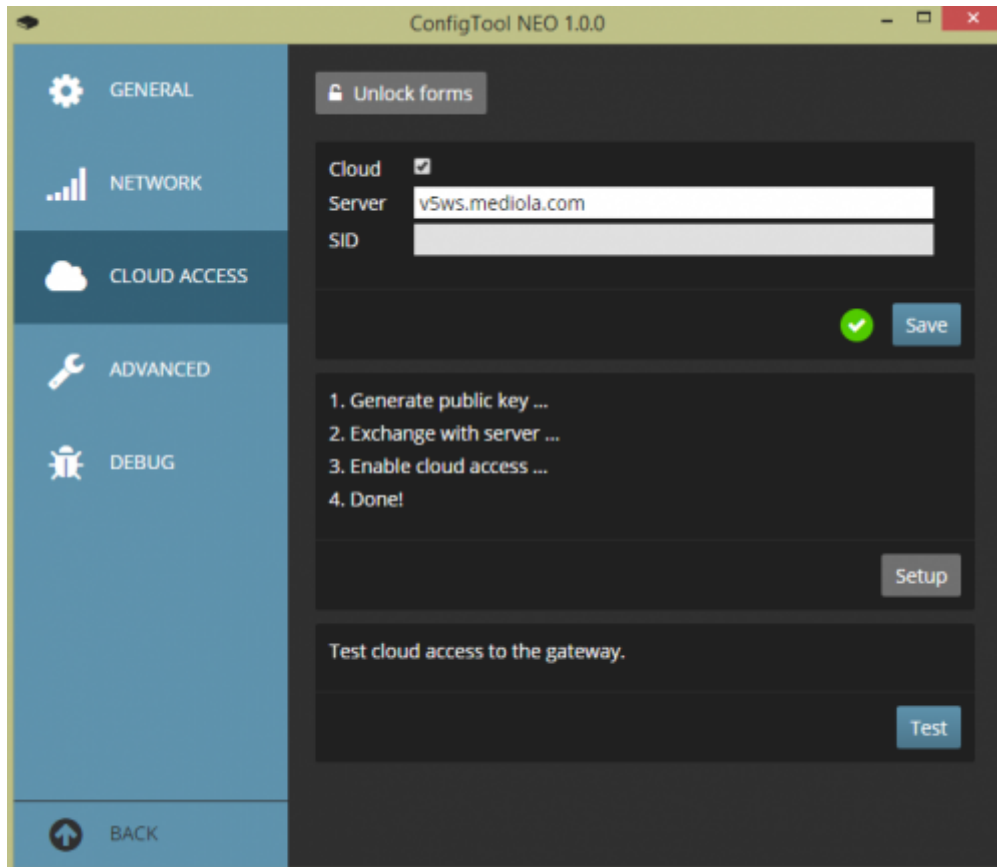
To set up the cloud access you have to select “Cloud access” from the settings page.

**Attention:** To use the cloud access you have to set a password on your gateway.

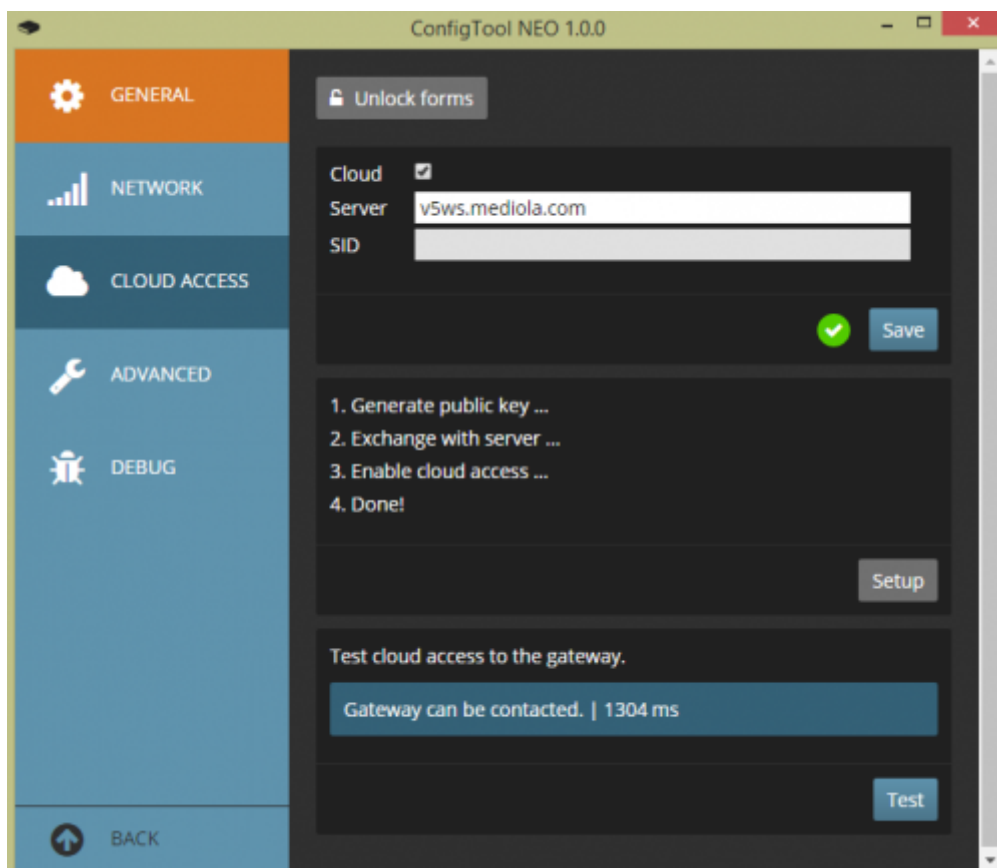


Now you simply mark the option “Cloud” and click “Save”.

**Important:** The address of the server should not be modified.



Now you have to click on “Setup”. The access to the cloud will now be set up and activated. At the end you can test the cloud access by clicking on “Test”.



If the was successful a message will appear which says that the gateway can be contacted and how

long the access lasts.

From:

<http://doku.mediola.com/> - **Dokumentationen**

Permanent link:

[http://doku.mediola.com/doku.php?id=en:v5:cloud\\_access](http://doku.mediola.com/doku.php?id=en:v5:cloud_access)

Last update: **2016/06/27 10:58**

